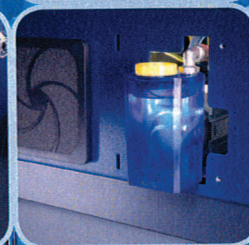
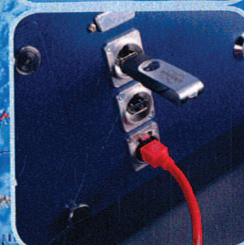
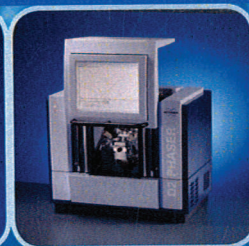
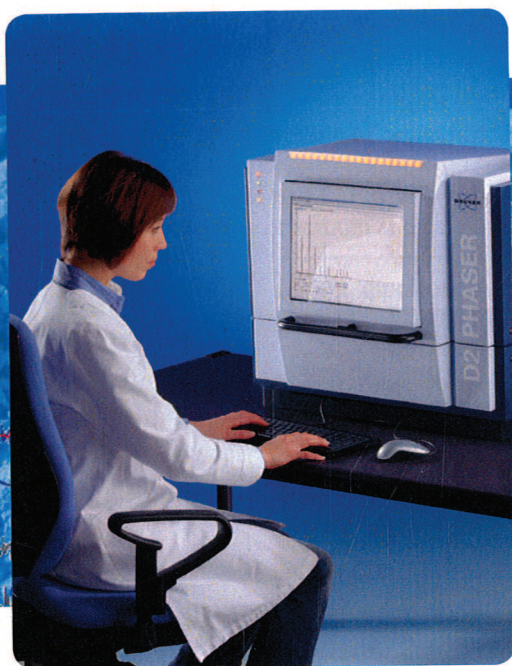


TOPAS V4

- **The Most Successful Package for X-ray Powder Diffraction**

- Simulated annealing, charge flipping and 3D Fourier analysis methods for structure determination
- 3D display of electron density distributions
- Quantitative phase analysis including Rietveld analysis, PONKCS, spiking method and degree of crystallinity analysis
- Support for Variable Counting Time (VCT) data



● **D2 PHASER** Desktop X-Ray Diffractometer

The D2 PHASER is a novel desktop analyzer that utilizes X-ray powder diffraction for qualitative and quantitative analysis of crystalline phases. The D2 PHASER is equipped with an integrated PC and a flat screen monitor. The new and very easy-to-use workflow software DIFFRAC.SUITE allows measurement and analysis right out of the box. Implemented with LYNXEYE™ compound silicon strip detector technology, the D2 PHASER is able to collect high quality data with unprecedented speed.

We implemented innovative technologies to make the D2 PHASER the most compact and fastest, all-in-one phase analyzer available on the market. The unit is mobile and easy to install with only the need for standard electrical power. It is therefore ideal for laboratory or on-location operation, in other words, it is a true Plug'n Analyze system.

Ease-of-use, high performance and low cost of ownership are the key features of the D2 PHASER. The D2 PHASER was developed to open new applications and markets beyond traditional XRD analysis. D2 PHASER – the price/performance leader for XRPD in laboratories and QC/PC applications for e.g. cement, industrial minerals, geology, chemistry, pharmaceuticals, as well as for educational purposes

Innovation with Integrity

XRD